





HI-LO COMPACT PANELS

The Hi-Lo Compact is the sister product to our Hi-Lo Round Top, sharing the same H₂O technology and high outputs but with factory-fitted grills and side panels for the traditional look radiator. As with all our panel radiators, the Hi-Lo Compact comes in a variety of types and sizes to fit any home and the high pressure testing they undergo means they will work on both commercial and domestic systems.

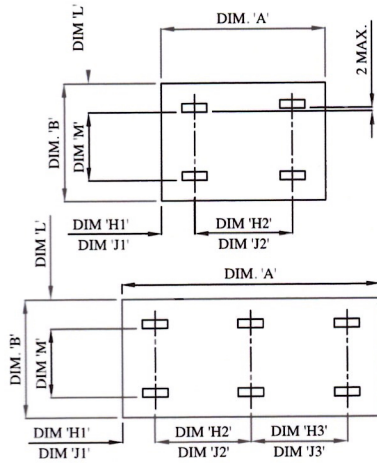
The Hi-Lo Compact has the same narrow water channels and increased fins so the outputs are some of the highest in the Compact market, as well as requiring less water to heat up so fits well with any energy-efficient home.



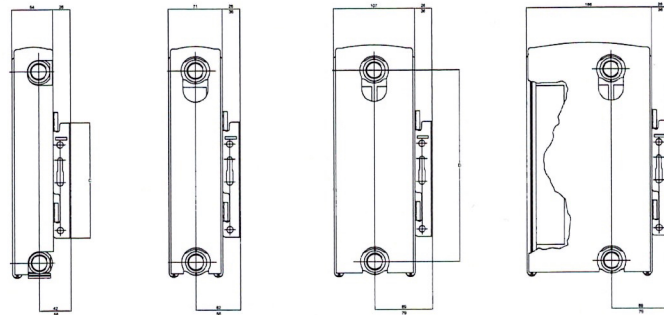
Key performance features and benefits:

-  ★★★★★
-  ★★★★★★
-  ★★★★★★
-  ★★★★★★

Actual Dimensions



Mounting Details



Single Convector

Double Panel Plus

Double Convector

Triple Convector

Note: Dimensions H1, H2 and H3 refer to the lugs on Double Panel Plus and Double Convector radiators. Dimensions J1, J2 and J3 refer to the lugs on Single Convector Radiators.

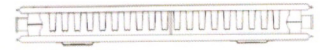
Mounting Details						
Radiator Height 'B'	300	400	500	600	700	900
Bracket Lug Heights 'M'	105	105	205	305	405	605
Connection Centres 'D'	253	353	453	553	653	853
Bracket Length 'C'	137	137	237	337	437	637
Top of Radiator to bottom of top lug 'L'	110	160	160	160	160	160
Bracket to top of radiator	100	150	150	150	150	150

Bracket Lug Locations																
Radiator Length (mm)	300	400	500	600	700	800	900	1000	1100	1200	1300	1400	1500	1600	1800	2000
A	295	395	495	595	695	795	895	995	1095	1195	1295	1395	1495	1595	1795	1995
H1	72.5	122.5	122.5	122.5	122.5	122.5	122.5	122.5	122.5	122.5	122.5	122.5	122.5	122.5	122.5	122.5
J1	85	135	160	160	160	160	160	160	160	160	160	160	160	160	160	160
H2	150	150	250	350	450	550	650	750	850	950	1050	1150	1250	1350	775	875
J2	125	125	175	275	375	475	575	675	775	875	975	1075	1175	1275	750	850
H3															775	875
J3															725	825
Qty	4	4	4	4	4	4	4	4	4	4	4	4	4	4	6	6

Water Content						
Height	300mm (12")	400mm (16")	500mm (20")	600mm (24")	700mm (28")	900mm (35")
Litres/Metre						
Single Convector	1.81	2.24	2.67	3.10	3.53	4.40
Double Panel Plus	3.60	4.47	5.33	6.20	7.07	8.80
Double Convector	3.50	4.37	5.23	6.10	7.00	8.80
Triple Convector	5.40	6.60	7.80	9.00	10.38	13.14

Radiator Dry Weight						
Height	300mm (12")	400mm (16")	500mm (20")	600mm (24")	700mm (28")	900mm (35")
kgs/Metre						
Single Convector	8.53	11.44	14.35	17.26	20.16	25.98
Double Panel Plus	14.33	19.04	23.75	28.47	33.18	42.61
Double Convector	16.92	22.73	28.55	34.36	40.18	51.81
Triple Convector	26.80	36.53	46.27	56.00	65.73	85.30

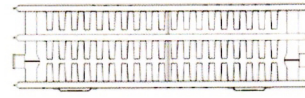
All panel radiators can be produced in lengths of up to 3000mm long. Please contact the Sales Office for more information.



Nominal Height	Length		Single Convector			Double Panel Plus		
	mm	inch	Code	BTU/hr	Watts	Code	BTU/hr	Watts
300mm 12"	300	12	Q11303KD	573	168	Q21303KD	848	248
	400	16	Q11304KD	765	224	Q21304KD	1130	331
	500	20	Q11305KD	956	280	Q21305KD	1413	414
	600	24	Q11306KD	1147	336	Q21306KD	1696	497
	700	28	Q11307KD	1338	392	Q21307KD	1978	580
	800	31	Q11308KD	1529	448	Q21308KD	2261	662
	900	35	Q11309KD	1720	504	Q21309KD	2543	745
	1000	39	Q11310KD	1911	560	Q21310KD	2826	828
	1100	43	Q11311KD	2102	616	Q21311KD	3109	911
	1200	47	Q11312KD	2294	672	Q21312KD	3391	994
	1300	51	Q11313KD	2485	728	Q21313KD	3674	1076
	1400	55	Q11314KD	2676	784	Q21314KD	3956	1159
	1500	59	Q11315KD	2867	840	Q21315KD	4239	1242
	1600	63	Q11316KD	3058	896	Q21316KD	4522	1325
	1800	71	Q11318KD	3440	1008	Q21318KD	5087	1490
	2000	79	Q11320KD	3823	1120	Q21320KD	5652	1656

Nominal Height	Length		Single Convector			Double Panel Plus		
	mm	inch	Code	BTU/hr	Watts	Code	BTU/hr	Watts
400mm 16"	300	12	Q11403KD	746	219	Q21403KD	1066	312
	400	16	Q11404KD	995	292	Q21404KD	1421	416
	500	20	Q11405KD	1244	365	Q21405KD	1776	521
	600	24	Q11406KD	1493	437	Q21406KD	2132	625
	700	28	Q11407KD	1742	510	Q21407KD	2487	729
	800	31	Q11408KD	1990	583	Q21408KD	2842	833
	900	35	Q11409KD	2239	656	Q21409KD	3198	937
	1000	39	Q11410KD	2488	729	Q21410KD	3553	1041
	1100	43	Q11411KD	2737	802	Q21411KD	3908	1145
	1200	47	Q11412KD	2986	875	Q21412KD	4264	1249
	1300	51	Q11413KD	3235	948	Q21413KD	4619	1353
	1400	55	Q11414KD	3483	1021	Q21414KD	4974	1457
	1500	59	Q11415KD	3732	1094	Q21415KD	5329	1562
	1600	63	Q11416KD	3981	1166	Q21416KD	5685	1666
	1800	71	Q11418KD	4479	1312	Q21418KD	6395	1874
	2000	79	Q11420KD	4976	1458	Q21420KD	7106	2082

Nominal Height	Length		Single Convector			Double Panel Plus		
	mm	inch	Code	BTU/hr	Watts	Code	BTU/hr	Watts
500mm 20"	300	12	Q11503KD	906	266	Q21503KD	1269	372
	400	16	Q11504KD	1208	354	Q21504KD	1691	496
	500	20	Q11505KD	1510	443	Q21505KD	2114	620
	600	24	Q11506KD	1812	531	Q21506KD	2537	743
	700	28	Q11507KD	2114	620	Q21507KD	2960	867
	800	31	Q11508KD	2416	708	Q21508KD	3383	991
	900	35	Q11509KD	2718	797	Q21509KD	3806	1115
	1000	39	Q11510KD	3021	885	Q21510KD	4229	1239
	1100	43	Q11511KD	3323	974	Q21511KD	4652	1363
	1200	47	Q11512KD	3625	1062	Q21512KD	5074	1487
	1300	51	Q11513KD	3927	1151	Q21513KD	5497	1611
	1400	55	Q11514KD	4229	1239	Q21514KD	5920	1735
	1500	59	Q11515KD	4531	1328	Q21515KD	6343	1859
	1600	63	Q11516KD	4833	1416	Q21516KD	6766	1982
	1800	71	Q11518KD	5437	1593	Q21518KD	7612	2230
	2000	79	Q11520KD	6041	1770	Q21520KD	8457	2478



Nominal Height	Length		Double Convector			Triple Convector		
	mm	inch	Code	BTU/hr	Watts	Code	BTU/hr	Watts
300mm 12"	300	12	Q22303KD	1121	329	Q33303KD	1629	477
	400	16	Q22304KD	1495	438	Q33304KD	2172	636
	500	20	Q22305KD	1869	548	Q33305KD	2715	796
	600	24	Q22306KD	2242	657	Q33306KD	3258	955
	700	28	Q22307KD	2616	767	Q33307KD	3801	1114
	800	31	Q22308KD	2990	876	Q33308KD	4344	1273
	900	35	Q22309KD	3364	986	Q33309KD	4887	1432
	1000	39	Q22310KD	3737	1095	Q33310KD	5430	1591
	1100	43	Q22311KD	4111	1205	Q33311KD	5973	1750
	1200	47	Q22312KD	4485	1314	Q33312KD	6516	1909
	1300	51	Q22313KD	4858	1424	Q33313KD	7059	2068
	1400	55	Q22314KD	5232	1533	Q33314KD	7602	2227
	1500	59	Q22315KD	5606	1643	Q33315KD	8145	2387
	1600	63	Q22316KD	5980	1752	Q33316KD	8688	2546
	1800	71	Q22318KD	6727	1971	Q33318KD	9774	2864
	2000	79	Q22320KD	7474	2190	Q33320KD	10860	3182

Nominal Height	Length		Double Convector			Triple Convector		
	mm	inch	Code	BTU/hr	Watts	Code	BTU/hr	Watts
400mm 16"	300	12	Q22403KD	1423	417	Q33403KD	2067	606
	400	16	Q22404KD	1898	556	Q33404KD	2756	808
	500	20	Q22405KD	2372	695	Q33405KD	3445	1010
	600	24	Q22406KD	2846	834	Q33406KD	4135	1211
	700	28	Q22407KD	3321	973	Q33407KD	4824	1413
	800	31	Q22408KD	3795	1112	Q33408KD	5513	1615
	900	35	Q22409KD	4270	1251	Q33409KD	6202	1817
	1000	39	Q22410KD	4744	1390	Q33410KD	6891	2019
	1100	43	Q22411KD	5218	1529	Q33411KD	7580	2221
	1200	47	Q22412KD	5693	1668	Q33412KD	8269	2423
	1300	51	Q22413KD	6167	1807	Q33413KD	8958	2625
	1400	55	Q22414KD	6642	1946	Q33414KD	9647	2827
	1500	59	Q22415KD	7116	2085	Q33415KD	10336	3029
	1600	63	Q22416KD	7591	2224	Q33416KD	11025	3230
	1800	71	Q22418KD	8539	2502	Q33418KD	12404	3634
	2000	79	Q22420KD	9488	2780	Q33420KD	13782	4038

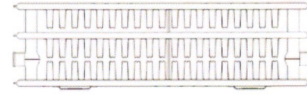
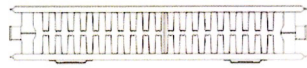
Nominal Height	Length		Double Convector			Triple Convector		
	mm	inch	Code	BTU/hr	Watts	Code	BTU/hr	Watts
500mm 20"	300	12	Q22503KD	1702	499	Q33503KD	2465	722
	400	16	Q22504KD	2269	665	Q33504KD	3286	963
	500	20	Q22505KD	2836	831	Q33505KD	4108	1204
	600	24	Q22506KD	3403	997	Q33506KD	4929	1444
	700	28	Q22507KD	3971	1163	Q33507KD	5751	1685
	800	31	Q22508KD	4538	1330	Q33508KD	6572	1926
	900	35	Q22509KD	5105	1496	Q33509KD	7394	2166
	1000	39	Q22510KD	5672	1662	Q33510KD	8215	2407
	1100	43	Q22511KD	6240	1828	Q33511KD	9037	2648
	1200	47	Q22512KD	6807	1994	Q33512KD	9858	2888
	1300	51	Q22513KD	7374	2161	Q33513KD	10680	3129
	1400	55	Q22514KD	7941	2327	Q33514KD	11501	3370
	1500	59	Q22515KD	8509	2493	Q33515KD	12323	3611
	1600	63	Q22516KD	9076	2659	Q33516KD	13144	3851
	1800	71	Q22518KD	10210	2992	Q33518KD	14787	4333
	2000	79	Q22520KD	11345	3324	Q33520KD	16430	4814



Nominal Height	Length		Single Convector			Double Panel Plus		
	mm	inch	Code	BTU/hr	Watts	Code	BTU/hr	Watts
600mm 24"	300	12	Q11603KD	1056	309	Q21603KD	1459	428
	400	16	Q11604KD	1408	412	Q21604KD	1945	570
	500	20	Q11605KD	1759	516	Q21605KD	2432	713
	600	24	Q11606KD	2111	619	Q21606KD	2918	855
	700	28	Q11607KD	2463	722	Q21607KD	3404	998
	800	31	Q11608KD	2815	825	Q21608KD	3891	1140
	900	35	Q11609KD	3167	928	Q21609KD	4377	1283
	1000	39	Q11610KD	3519	1031	Q21610KD	4864	1425
	1100	43	Q11611KD	3871	1134	Q21611KD	5350	1568
	1200	47	Q11612KD	4223	1237	Q21612KD	5836	1710
	1300	51	Q11613KD	4574	1340	Q21613KD	6323	1853
	1400	55	Q11614KD	4926	1443	Q21614KD	6809	1995
	1500	59	Q11615KD	5278	1547	Q21615KD	7295	2138
	1600	63	Q11616KD	5630	1650	Q21616KD	7782	2280
	1800	71	Q11618KD	6334	1856	Q21618KD	8754	2565
2000	79	Q11620KD	7038	2062	Q21620KD	9727	2850	

Nominal Height	Length		Single Convector			Double Panel Plus		
	mm	inch	Code	BTU/hr	Watts	Code	BTU/hr	Watts
700mm 28"	300	12	Q11703KD	1194	350	Q21703KD	1639	480
	400	16	Q11704KD	1592	466	Q21704KD	2186	640
	500	20	Q11705KD	1990	583	Q21705KD	2732	801
	600	24	Q11706KD	2388	700	Q21706KD	3279	961
	700	28	Q11707KD	2786	816	Q21707KD	3825	1121
	800	31	Q11708KD	3184	933	Q21708KD	4371	1281
	900	35	Q11709KD	3582	1049	Q21709KD	4918	1441
	1000	39	Q11710KD	3980	1166	Q21710KD	5464	1601
	1100	43	Q11711KD	4378	1283	Q21711KD	6011	1761
	1200	47	Q11712KD	4775	1399	Q21712KD	6557	1921
	1300	51	Q11713KD	5173	1516	Q21713KD	7103	2081
	1400	55	Q11714KD	5571	1632	Q21714KD	7650	2241
	1500	59	Q11715KD	5969	1749	Q21715KD	8196	2402
	1600	63	Q11716KD	6367	1866	Q21716KD	8743	2562
	1800	71	Q11718KD	7163	2099	Q21718KD	9836	2882
2000	79	Q11720KD	7959	2332	Q21720KD	10928	3202	

Nominal Height	Length		Single Convector			Double Panel Plus		
	mm	inch	Code	BTU/hr	Watts	Code	BTU/hr	Watts
900mm 35"	300	12	Q11903KD	1440	422	Q21903KD	1970	577
	400	16	Q11904KD	1919	562	Q21904KD	2627	770
	500	20	Q11905KD	2399	703	Q21905KD	3283	962
	600	24	Q11906KD	2879	844	Q21906KD	3940	1154
	700	28	Q11907KD	3359	984	Q21907KD	4597	1347
	800	31	Q11908KD	3839	1125	Q21908KD	5253	1539
	900	35	Q11909KD	4319	1265	Q21909KD	5910	1732
	1000	39	Q11910KD	4799	1406	Q21910KD	6567	1924
	1100	43	Q11911KD	5279	1547	Q21911KD	7223	2116
	1200	47	Q11912KD	5758	1687	Q21912KD	7880	2309
	1300	51	Q11913KD	6238	1828	Q21913KD	8537	2501
	1400	55	Q11914KD	6718	1968	Q21914KD	9193	2694
	1500	59	Q11915KD	7198	2109	Q21915KD	9850	2886
	1600	63	Q11916KD	7678	2250	Q21916KD	10507	3078
	1800	71	Q11918KD	8638	2531	Q21918KD	11820	3463
2000	79	Q11920KD	9597	2812	Q21920KD	13133	3848	



Nominal Height	Length		Double Convector			Triple Convector		
	mm	inch	Code	BTU/hr	Watts	Code	BTU/hr	Watts
600mm 24"	300	12	Q22603KD	1960	574	Q33603KD	2823	827
	400	16	Q22604KD	2613	766	Q33604KD	3764	1103
	500	20	Q22605KD	3266	957	Q33605KD	4705	1379
	600	24	Q22606KD	3919	1148	Q33606KD	5646	1654
	700	28	Q22607KD	4573	1340	Q33607KD	6587	1930
	800	31	Q22608KD	5226	1531	Q33608KD	7528	2206
	900	35	Q22609KD	5879	1723	Q33609KD	8469	2481
	1000	39	Q22610KD	6532	1914	Q33610KD	9410	2757
	1100	43	Q22611KD	7186	2105	Q33611KD	10351	3033
	1200	47	Q22612KD	7839	2297	Q33612KD	11292	3308
	1300	51	Q22613KD	8492	2488	Q33613KD	12233	3584
	1400	55	Q22614KD	9145	2680	Q33614KD	13173	3860
	1500	59	Q22615KD	9799	2871	Q33615KD	14114	4136
	1600	63	Q22616KD	10452	3062	Q33616KD	15055	4411
	1800	71	Q22618KD	11758	3445	Q33618KD	16937	4963
2000	79	Q22620KD	13065	3828	Q33620KD	18819	5514	

Nominal Height	Length		Double Convector			Triple Convector		
	mm	inch	Code	BTU/hr	Watts	Code	BTU/hr	Watts
700mm 28"	300	12	Q22703KD	2200	645	Q33703KD	3146	922
	400	16	Q22704KD	2934	860	Q33704KD	4195	1229
	500	20	Q22705KD	3667	1075	Q33705KD	5244	1537
	600	24	Q22706KD	4401	1289	Q33706KD	6293	1844
	700	28	Q22707KD	5134	1504	Q33707KD	7342	2151
	800	31	Q22708KD	5868	1719	Q33708KD	8391	2458
	900	35	Q22709KD	6601	1934	Q33709KD	9439	2766
	1000	39	Q22710KD	7335	2149	Q33710KD	10488	3073
	1100	43	Q22711KD	8068	2364	Q33711KD	11537	3380
	1200	47	Q22712KD	8801	2579	Q33712KD	12586	3688
	1300	51	Q22713KD	9535	2794	Q33713KD	13635	3995
	1400	55	Q22714KD	10268	3009	Q33714KD	14683	4302
	1500	59	Q22715KD	11002	3224	Q33715KD	15732	4610
	1600	63	Q22716KD	11735	3438	Q33716KD	16781	4917
	1800	71	Q22718KD	13202	3868	Q33718KD	18879	5531
2000	79	Q22720KD	14669	4298	Q33720KD	20976	6146	

Nominal Height	Length		Double Convector			Triple Convector		
	mm	inch	Code	BTU/hr	Watts	Code	BTU/hr	Watts
900mm 35"	300	12	Q22903KD	2631	771	Q33903KD	3698	1084
	400	16	Q22904KD	3509	1028	Q33904KD	4931	1445
	500	20	Q22905KD	4386	1285	Q33905KD	6164	1806
	600	24	Q22906KD	5263	1542	Q33906KD	7397	2167
	700	28	Q22907KD	6140	1799	Q33907KD	8629	2528
	800	31	Q22908KD	7017	2056	Q33908KD	9862	2890
	900	35	Q22909KD	7894	2313	Q33909KD	11095	3251
	1000	39	Q22910KD	8771	2570	Q33910KD	12328	3612
	1100	43	Q22911KD	9649	2827	Q33911KD	13561	3973
	1200	47	Q22912KD	10526	3084	Q33912KD	14793	4334
	1300	51	Q22913KD	11403	3341	Q33913KD	16026	4696
	1400	55	Q22914KD	12280	3598	Q33914KD	17259	5057
	1500	59	Q22915KD	13157	3855	Q33915KD	18492	5418
	1600	63	Q22916KD	14034	4112	Q33916KD	19724	5779
	1800	71	Q22918KD	15789	4626	Q33918KD	22190	6502
2000	79	Q22920KD	17543	5140	Q33920KD	24656	7224	



STRAIGHT CHROME HEATED TOWEL RAILS



APPROVED



DOMESTIC



HOTEL & LEISURE

PRODUCT INFORMATION

FL12050CP	W500 x H1200mm straight chrome heated towel rail, BTU 1119, pipe centre 460mm
FL12060CP	W600 x H1200mm straight chrome heated towel rail, BTU 1335, pipe centre 560mm

RELATED PRODUCTS

RSVAL01	Round straight radiator valve
RAVAL01	Round angled radiator valve
GED202513	Hanging hook for robe or towel

MATERIAL	Steel
COLOUR/FINISH	Chrome
MANUFACTURER	Sonas Bathrooms
FIXING	Fix to wall brackets supplied
APPROVALS	EN442-1
PRODUCT DIMENSIONS	Please refer to technical drawing
ADDITIONAL INFORMATION	For a full range of heated towel rails visit www.sonasbathrooms.com



All measurements shown are in millimetres.
Drawing sizes are not to scale.

bsi.



Kitemark™ Licence

This is to certify that:

Quinn Radiators Limited

Imperial Park
Celtic Lakes
Newport
NP10 8ZY
United Kingdom

Holds Kitemark Licence Number:

KM 507661

In respect of:

**BS EN 442 -Radmac
Radiators and Convectors**

This issues the right and Licence to use the Kitemark in accordance with the Kitemark Terms and Conditions governing the use of the Kitemark, as may be updated from time to time by BSI Assurance UK Ltd (the "Conditions"). All defined terms in this Licence shall have the same meaning as in the Conditions.

The use of the Kitemark is authorized in respect of the Product(s) detailed on this Licence provided at or from the above address.

For and on behalf of BSI:

Gary Fenton, Global Assurance Director

First Issued: 8/12/2006

Latest Issue: 23/12/2013



No. KM 507661

BS EN 442 - Radiators and Convectors

25mm Pitch Round Top Compact & Compact Ventile

Single Convector Type 11

Height (mm)	Length (mm)
300, 400, 500, 600, 700 & 900	300 - 3000

Double Panel Plus Convector Type 21

Height (mm)	Length (mm)
300, 400, 500, 600, 700 & 900	300 - 3000

Double Panel, Double Convector Type 22

Height (mm)	Length (mm)
300, 400, 500, 600, 700 & 900	300 - 3000

Triple Panel, Triple Convector Type 33

Height (mm)	Length (mm)
300, 400, 500, 600, 700 & 900	300 - 3000

The Quinn radiator range above may also be marketed as 'Trendline'

First Issued: 8/12/2006

Latest Issue: 23/12/2013

Page 2 of 8

No. KM 507661

25mm Pitch Round Top

Single Panel Type 10

Height (mm)	Length (mm)
300, 400, 500, 600, 700 & 900	300 - 3000

Single Convactor Type 11

Height (mm)	Length (mm)
300, 400, 500, 600, 700 & 900	300 - 3000

Double Panel Convactor Type 20

Height (mm)	Length (mm)
300, 400, 500, 600, 700 & 900	300 - 3000

Double Panel Plus Convactor Type 21

Height (mm)	Length (mm)
300, 400, 500, 600, 700 & 900	300 - 3000

Double Panel, Double Convactor Type 22

Height (mm)	Length (mm)
300, 400, 500, 600, 700 & 900	300 - 3000

Triple Panel, Triple Convactor Type 33

Height (mm)	Length (mm)
300, 400, 500, 600, 700 & 900	300 - 3000

The Quinn radiator range above may also be marketed as 'Trendline'

HLK Reports A06 C1.111.7887, A06 C1.221.7883, A06 C1.221.7884,
A06 C1.331.7885 and A06 C1.331.7886 refer.

First Issued: 8/12/2006

Latest Issue: 23/12/2013

No. KM 507661

Horizontal Panel Radiator Range

Single Panel Radiator Type H10

Height (mm)	Length (mm)
143 – 868 in increments of 72.5	400 – 3400 in increments of 100

Single Panel, Single Convactor Radiator Type H11

Height (mm)	Length (mm)
143 – 868 in increments of 72.5	400 – 3400 in increments of 100

Double Panel Radiator Type H20

Height (mm)	Length (mm)
143 – 868 in increments of 72.5	400 – 3400 in increments of 100

Double Panel, Single Convactor Radiator Type H21

Height (mm)	Length (mm)
143 – 868 in increments of 72.5	400 – 3400 in increments of 100

Double Panel, Double Convactor Radiator Type H22

Height (mm)	Length (mm)
143 – 868 in increments of 72.5	400 – 3400 in increments of 100

HLK reports B08.101.2248, B08.111.2249, B08.201.2191, B08.211.2250 and B08.221.2251 refer.

First Issued: 8/12/2006

Latest Issue: 23/12/2013

No. KM 507661

Vertical Panel Radiator Range

Single Panel Radiator Type V10

Height (mm)	Length (mm)
500 – 3000 in increments of 100	288 – 868 in increments of 72.5

Single Panel, Single Convactor Radiator Type V11

Height (mm)	Length (mm)
500 – 3000 in increments of 100	288 – 868 in increments of 72.5

Double Panel Radiator Type V20

Height (mm)	Length (mm)
500 – 3000 in increments of 100	288 – 868 in increments of 72.5

HLK Reports B08.101.2196, B08.111.2300 and B08.201.2197 refer.

First Issued: 8/12/2006

Latest Issue: 23/12/2013

No. KM 507661

25mm Pitch Round Top WARMASTYLE

Single Convactor Type 11

Height (mm)	Length (mm)
400, 500, 600 & 700	300 - 3000

Double Panel Plus Convactor Type 21

Height (mm)	Length (mm)
400, 500, 600 & 700	300 - 3000

Double Panel, Double Convactor Type 22

Height (mm)	Length (mm)
400, 500, 600 & 700	300 - 3000

The Quinn radiator range above may also be marketed as 'Barlo Roundtop' and 'Qrad'.

BSRIA Report 53906/1 and BSRIA Report 53906/3 refer.

First Issued: 8/12/2006

Latest Issue: 23/12/2013

Page 6 of 8

No. KM 507661

25mm Pitch Compact WARMASTYLE

Single Convector Type 11

Height (mm)	Length (mm)
400, 500, 600 & 700	300 - 3000

Double Panel Plus Convector Type 21

Height (mm)	Length (mm)
400, 500, 600 & 700	300 - 3000

Double Panel, Double Convector Type 22

Height (mm)	Length (mm)
400, 500, 600 & 700	300 - 3000

The Quinn radiator range above may also be marketed as 'Barlo Compact' and 'Qrad Compact'.

BSRIA Report 53906/1 refers.

First Issued: 8/12/2006

Latest Issue: 23/12/2013

No. KM 507661

Compla and Ligna Flat Panel Radiator Range

Compla Type 11

Height (mm)	Length (mm)
300, 400, 500, 600, 700 & 900	300 - 3000

Compla Type 22

Height (mm)	Length (mm)
300, 400, 500, 600, 700 & 900	300 - 3000

Compla Type 33

Height (mm)	Length (mm)
300, 400, 500, 600, 700 & 900	300 - 3000

Ligna Type 22

Height (mm)	Length (mm)
300, 400, 500, 600, 700 & 900	300 - 3000

Ligna Type 33

Height (mm)	Length (mm)
300, 400, 500, 600, 700 & 900	300 - 3000

The Quinn radiator range above may also be marketed as 'Watersmith'

HLK Reports A13. C1.221.23333, A13.C1.331.2334, B13.211.2478, B13.111.2477, B13.211.2479, B13.331.2480 refer .

First Issued: 8/12/2006

Latest Issue: 23/12/2013

Page 8 of 8